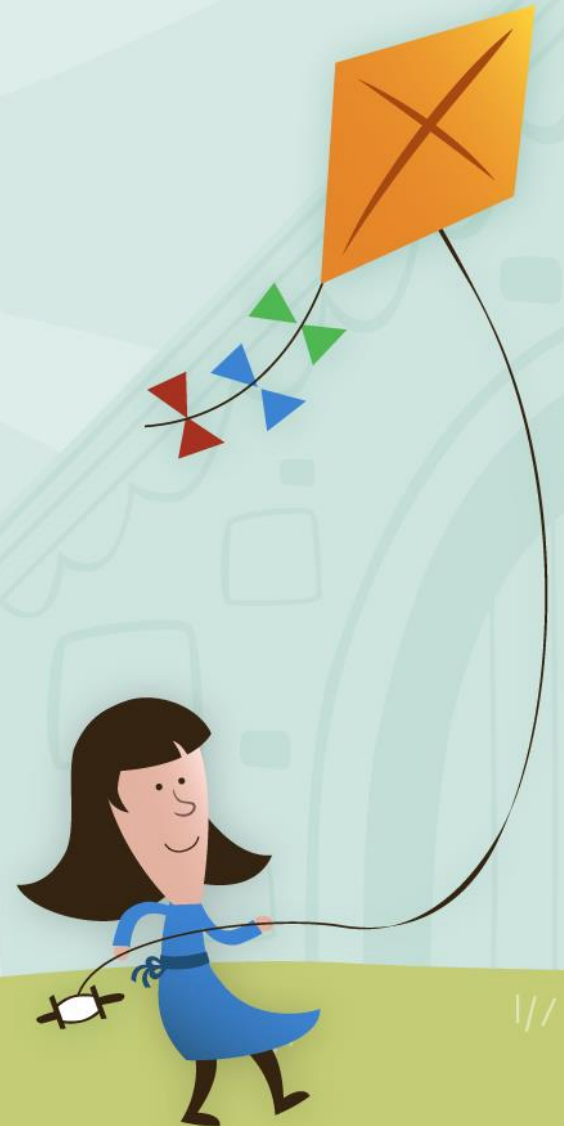


# Welcome to Year 6 at Crestwood Park



# HOME-SCHOOL AGREEMENT

- Please read and then they will be available to sign on Parents' Evening.
- We as teachers will also sign and adhere to the agreement.



## HOME-SCHOOL AGREEMENT

As a school we will:

<b>S M A R T</b>	Provide a professional but approachable, friendly environment where staff work in partnership with parents/carers to provide high quality care and education.
<b>P O L I T E</b>	Encourage your child to take responsibility for their words and actions, encouraging them to develop positive relationships.
<b>A W A R E</b>	Always pledge that our children will receive high quality whole-class teaching and provide extra support when required to enable them to reach their full potential. This includes being aware of, and acting upon, the well-being and mental health needs of our children.
<b>R E S P E C T F U L</b>	Show respect by listening to children and parents, ensuring children are supported to learn both at school and at home.
<b>K I N D</b>	Use rewards and sanctions fairly. We will not tolerate bullying of any kind.
<b>S A F E</b>	Establish a safe and stimulating environment rooted in mutual respect; where children feel safe and motivated to learn.

As children we will:

<b>S M A R T</b>	Wear our uniform with PRIDE and display a HARD-WORKING attitude.
<b>P O L I T E</b>	Be well-mannered and SOCIABLE to others.
<b>A W A R E</b>	Be aware of our school motto to 'Be the best' and strive to be RELIABLE, RESOURCEFUL and REFLECTIVE. Be aware of the lessons we are taught to promote our well-being and mental health.
<b>R E S P E C T F U L</b>	Show respect for others by listening and following instructions. Respect school property and other people's belongings.
<b>K I N D</b>	Be kind, be POSITIVE, not say hurtful things. Keep our hands and feet to ourselves. Avoid using physical contact.
<b>S A F E</b>	Be honest to staff, children, and each other. Know that the adults in school will listen to us and take any concerns we have seriously.

As parents/carers we will:

<b>S M A R T</b>	Ensure our children arrive at school by 8.50am every day and support school policies in relation to school uniform.
<b>P O L I T E</b>	Encourage our children to behave well and support the school's Behaviour Policy.
<b>A W A R E</b>	Help our children to succeed by helping them at home with learning. This includes reading with them regularly and also working with school to support our children's well-being and mental health.
<b>R E S P E C T F U L</b>	Manage our behaviour in and around school, providing mature role-models in how others should be treated.
<b>K I N D</b>	Support children, staff and each other creating new friendships and role-modelling positive social skills.
<b>S A F E</b>	Raise any issues in a calm, supportive manner by contacting school directly. Work with the school and model safe and respectful behaviour when using social media.

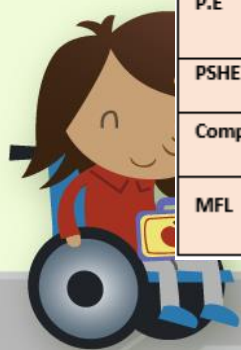
# A typical day in the life of a year 6 child...

Day	Staff	Morning Activity	Assembly	SPAG	English	Maths	RE/Music	Computing	Storytime
<b>MONDAY</b>	A Cadman	Morning Activity	Assembly	SPAG - Spelling	English	Maths	RE/Music	Computing	Storytime
<b>TUESDAY</b>	A Cadman	Morning Activity	Assembly	SPAG	Swimming	Maths	History	History	Storytime
<b>WEDNESDAY</b>	A Cadman / G Priest	Morning Activity	Assembly	SPAG	English	Maths	Science	MFL	Storytime
<b>THURSDAY</b>	G Priest	Morning Activity	Assembly	SPAG	English	Maths	PE	Art	Storytime
<b>FRIDAY</b>	G Priest	Morning Activity	Assembly	SPAG	English	Maths	PSHE	Storytime & Planner update	
<b>MORNING BREAK 10:45 - 11am</b>									
<b>LUNCHTIME 12:00 - 1:00pm</b>									
Mile Walk	AR	House Reward				AR	RE/Music	Computing	Storytime
	AR					AR	History	History	Storytime
						AR	Science	MFL	Storytime
						AR	PE	Art	Storytime
							PSHE	Storytime & Planner update	



# Your Child's Curriculum Journey...

Subject	Autumn 1	Autumn 2	Spring 1	Spring 2	Summer 1	Summer 2
Reading	Reading skills sessions incorporated into English lessons and taught in isolation where appropriate.					
Writing	Narrative, Description, Characters/Settings	Report, Advertising, Argument, Newspaper article	Report, Narrative, Description – setting Balanced argument	Narrative, Description, Recount	Letter, Narrative, Description, Advertising	Biography, Report, Narrative, Description,
Mathematics	Place Value Addition, Subtraction, Multiplication and Division Fractions, Position and Direction		Decimals, Percentages Algebra, Converting Units Perimeter, Area and Volume		Statistics, Properties of Shape Consolidation and Themed projects	
Science	Animals including humans	Living things and their habitats	Light	Electricity	Evolution and inheritance	Evolution and inheritance
R.E	Rites of Passage		Buddhism		Leaders In Religion	
Music	Developing Melodic Phrases- How does music bring us together?	Understanding Structure and Form- How does music connect us with our past?	Gaining Confidence Through Performance – How does music improve our world?	Exploring Notation Further – How does music teach us about our community?	Exploring notation further- How does music teach us about our community?	Respecting each other through composition- How does music connect us with the environment?
Art	Colour	Drawing	Pattern	Texture	Printing	3D Form
D.T	Celebrating culture and seasonality		Pulleys or gears		Monitoring and control	
History	Battle of Britain: Why was winning the Battle of Britain in 1940 so important?	Shang Dynasty: How did a pile of dragon bones help solve an ancient Chinese mystery?			Local Area Study	
Geography			Earth's Formations			
P.E	Games- Tag- Rugby Dance	Gymnastics- Counterbalance and Counter tension Dance	Gymnastics- Matching, Mirroring and Contrasting Fitness Testing	Games- Football OAA- Preparation and Organisation	Games- Basketball Athletics – Running, Throwing and Jumping	Games- Rounders Fitness Testing
PSHE	How can we keep healthy as we grow?		How can the media influence people?		What will change as we become more independent? How do friendships change as we grow?	
Computing	Internet Communication	Webpage Creation	Variables in Games	Introduction to Spreadsheets	3D Modelling	Sensing
MFL	What's in your town? J'habite/ J'adore/ J'aime/ Je n'aime pas/ Je déteste What's in your town, singular and plural nouns		Describing personality, myself and other family members. Using intensifiers – assez, très, un peu		Talking about school subjects Giving opinions, days of the week	



# Class Expectations

- SPARKS

- Smart

- Polite

- Aware

- Respectful

- Kind

- Safe

- High expectations in Year 6 as they are the oldest and we are preparing them for the next part of their education journey.



# Roles and Responsibilities

- Each child will have a role – Sports ambassadors, SPARKS ambassadors, Digital Ambassadors, Reading Ambassadors, House Captains, Anti-Bullying Ambassadors.
- Every role is important.
- Each role will contribute to school life and will help to develop various qualities.
- Year 6 pupils should take pride in these roles.
- Other roles will include School Council, Playground Pals and Lunchtime Duty.





# Starting secondary school in September 2025

Why not apply for a place online?

If your child is due to start secondary school in 2025 then you will have to apply for a school place before 31 October 2024.



Visit to Secondary Schools start in September.

Look online for dates for the schools you want to visit.

There are open evenings (which you usually need to book)

Some schools offer open mornings — if you plan to go to these, please let us know.

**Dudley**  
Metropolitan Borough Council

one click ... makes it quick  
[www.dudley.gov.uk/admissions](http://www.dudley.gov.uk/admissions)



# Statutory Tests

- SATS are scheduled to take place Monday 12<sup>th</sup> May 2025 – Thursday 15<sup>th</sup> May 2024
- Monday – English: Spelling, Punctuation and Grammar Tests
- Tuesday – English: Reading
- Wednesday – Maths: Arithmetic and Maths: Reasoning
- Thursday – Maths: Reasoning



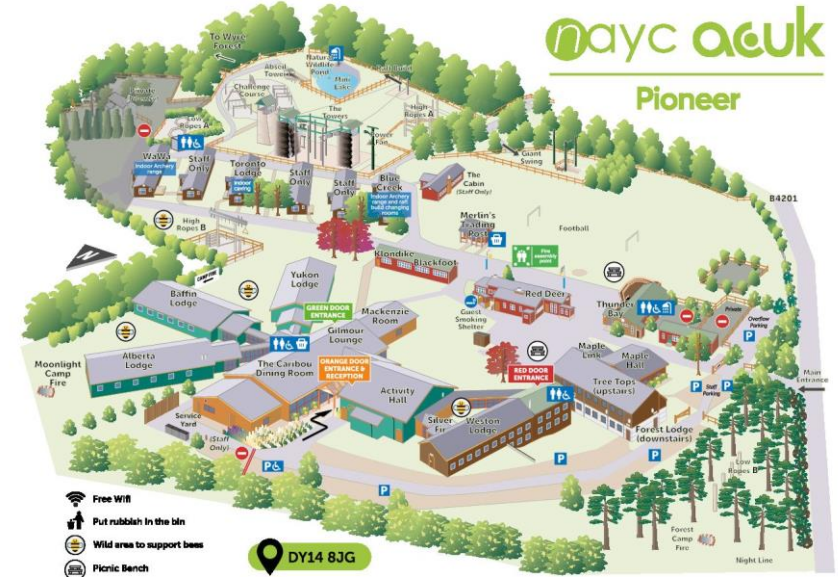


# Pioneer: Friday 13th June – Sunday 15th June 2025

## Pioneer Activity Centre (Cleobury Mortimer)

Fabulous opportunity to develop independence, perseverance, confidence and much more....

Zip wire  
Abseiling  
Climbing  
Raft building  
Caving



The estimated cost is £260 per person.

An interest and deposit letter will be sent out soon!

Please get that back to us as soon as possible, so that we can confirm numbers



# General Information

- Names in/on everything!
- Family Assemblies- Fridays at 9am
- Tuck – pre-pay online for toast or a milkshake
- Newsletters – Please read – some important information on these.
- Please make sure that you are able to access SCH LIFE as this is where we send messages.
- Homework due in on a MONDAY
- Swimming on a TUESDAY
- PE on THURSDAY
- Named water bottle
- Planners and Reading Diaries – available every day.
- SATS club – children will be invited to attend (starting after half term)



In Year 6, we do our very best to make your children independent and ready for Secondary School.

It is an important year — but a fun year where we try to give the children a variety of opportunities and experiences!



# Any questions?

